

STELRON INDEXERS

The "beef" is in the design,
With no "fat" in the price.

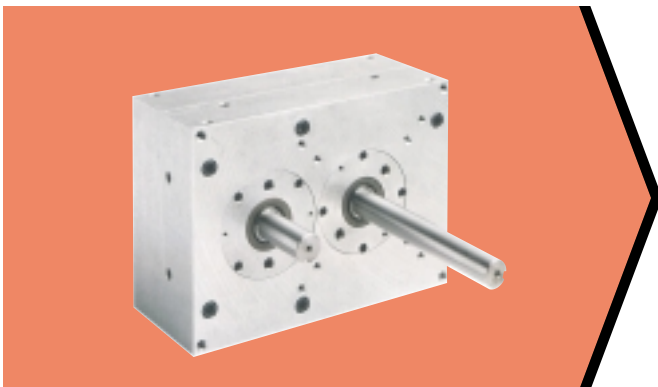


The Stelron RD series Index Drive major features:

- Oversize hardened and ground pre-loaded cam
- Wide variety of pure modified sine sequences (including some two and three stop sequences)
- High accuracy, high capacity crossed axis roller output bearing
- Universal mounting housing - machined 5 sides
- Large viewing window in housing
- Wide variety of low backlash gear reducers
- Adjustable input slip clutch offers simplicity and low cost with no loss in accuracy
- Available with internal (externally adjustable) output overload clutch

The Stelron RS series Index Drive major features:

- Shaft / flange output
- Oversize hardened and ground pre-loaded cam
- Wide variety of pure modified sine sequences (including short index periods for synchronous machinery)
- High accuracy, high capacity crossed axis roller output bearing allows superior support and most compact design available
- Universal mounting housing - machined 6 sides
- Large viewing window in housing
- Wide variety of low backlash gear reducers
- Input and output slip clutch options



The Stelron M series Index Drive major features:

- Shaft / flange output
- Dual hardened and ground conjugate cams
- Wide variety of motions including one stop and oscillating sequences
- Oversize tapered roller bearings support input and output shafts
- Output through hole available
- Universal mounting housing - machined 6 sides
- Large viewing window in housing
- Wide variety of low backlash gear reducers
- Input and output slip clutch options

• Pick & Place • Linear & Rotary • Anti-Friction Slides •
• Rotary Indexing • Walking Beam • Assembly Chassis •

