



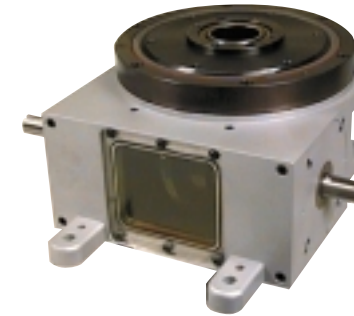
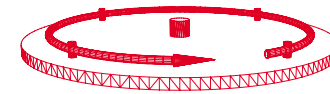
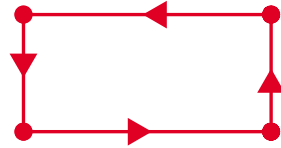
STELRON

COMPONENTS...

Building Blocks for Automation

X-Y Walking Beam

X-Y "Pick and Place," "Walking Beam" parts handler is available in seven sizes with maximum strokes up to 12" in the "X" axis and 5" in the "Y" axis.

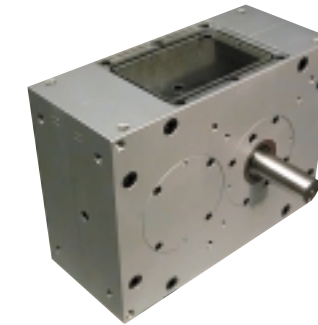
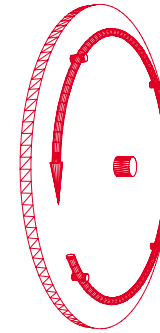
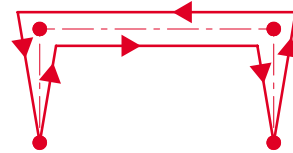
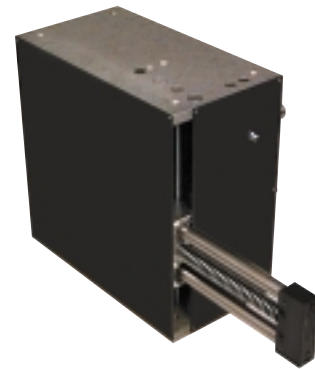


RD Indexer

Low profile cam actuated dial indexer. Supplied in (4) sizes with index positions from (2) stops to (32) stops. Optional output overload, input overload, cam actuated shot pin, and special motion profiles available.

X-Y Pick & Place

Cam actuated linear "Pick and Place" with adjustable or fixed strokes. Five sizes are available with maximum strokes up to 16" in the "X" axis and 6" in the "Y" axis.

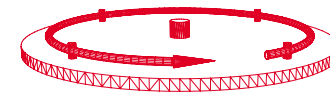
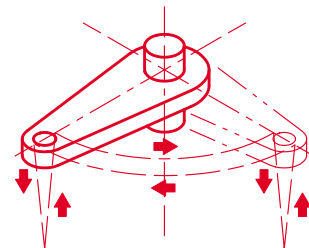


M Indexer

Cam actuated parallel shaft indexer. Machined on all (6) sides and supplied in (4) sizes with index positions from (1) stop to (8) stops. Oscillating motions, optional output overload, input overload, and special motion profiles available.

Rotary/Linear

Rotary/linear "Pick and Place" for machine loading/unloading is available in six sizes with linear strokes up to 10" and angular strokes up to 180 degrees.



RS Indexer

Low profile, cam actuated, right angle shaft indexer. Available in (2) stops to (24) stops in multiple index periods. Oscillating motions, optional output overload, input overload and special motion profiles available.

Quality you can depend on!

- Cam driven to handle demanding payloads.
- Standard and custom motions available
- Linear - Rotary - Inline
- Reciprocating & Oscillating motions
- Versatile mounting configurations

- Large tool steel cam air hardened and CNC profile ground
- Low profile housing machined on all surfaces
- Universal mounting on multiple sides
- Many standard sequences using modified sine
- Easy maintenance