

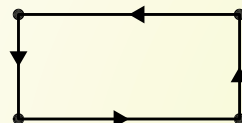


# STELRON

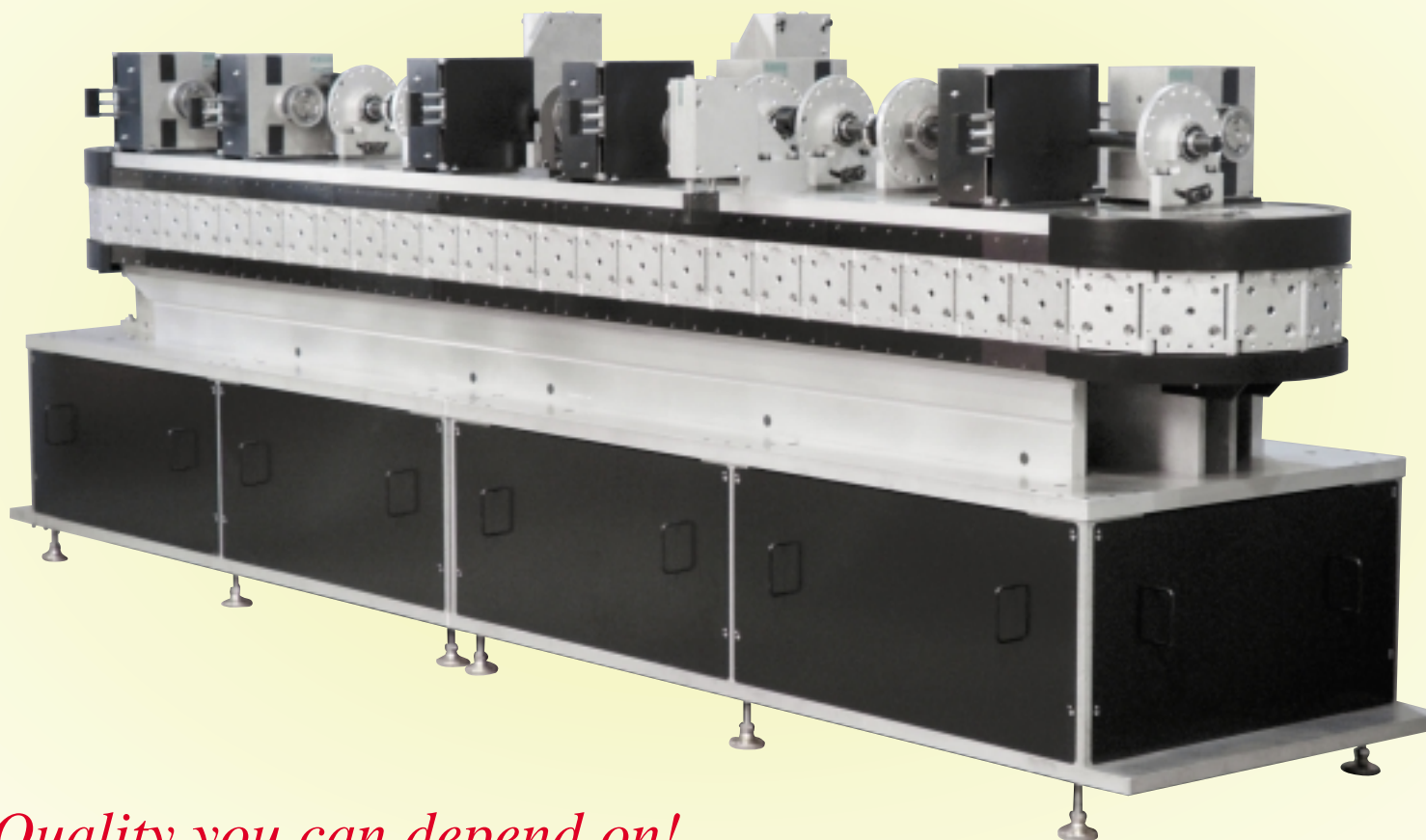
COMPONENTS...

## *Building Blocks for Automation*

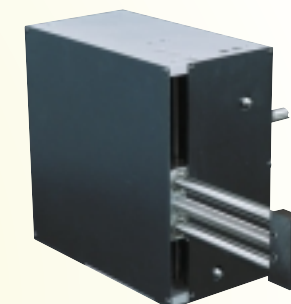
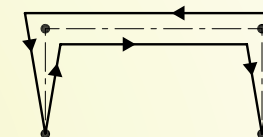
### X-Y Walking Beam



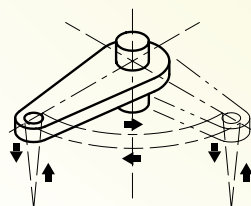
Stelron P-Link Chassis  
Accuracy +/- .003  
Speeds up to 100rpm



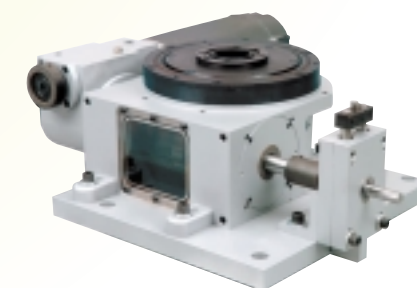
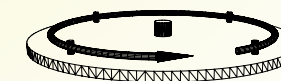
### X-Y Pick & Place



### Rotary/Linear



### Dial Index Drives



### *Quality you can depend on!*

- Robust, one-piece precision machined chassis.
- Precision machined aluminum links.
- All potential wear components are hardened and ground for long service life.
- Standard line shafts provide for easy integration of synchronous ancillary equipment
- Heavy duty Stelron RD-3 Index Drive.
- Removable Top Plate for custom machining and mounting of ancillary equipment.
- Six inch pitch links. (other sizes available).