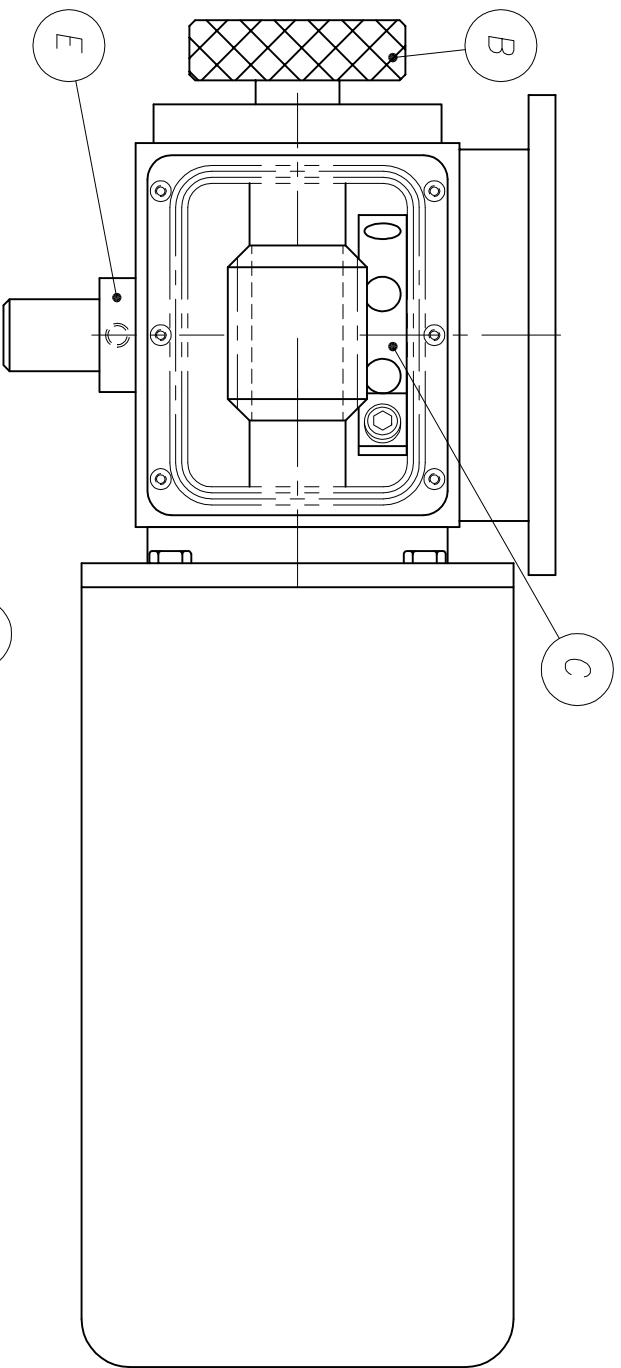


# STELTRON COMPONENTS, Inc.

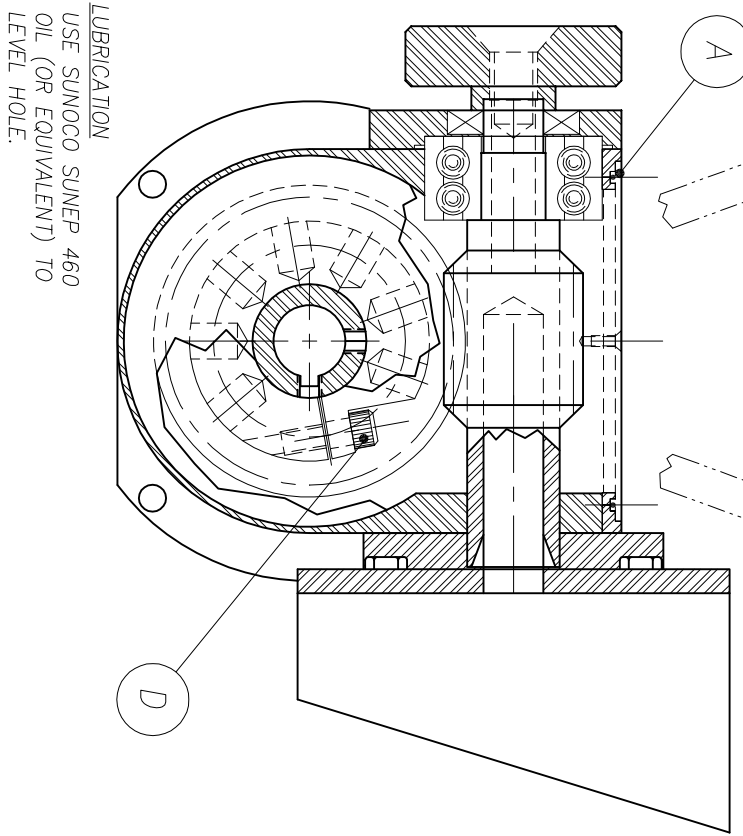
SCALE: HALF	DRAWN BY: RZ
DATE: 6/3/96	REVISION:
PLOT A 1=2	
TITLE	
ASSEMBLY DRAWING	
GR WORM GEAR POWER DRIVE	DRAWING NO. GR-175A



### CLUTCH ADJUSTMENT

#### TO INCREASE TORQUE SETTING

- (1) REMOVE TOP COVER "A".
  - (2) ROTATE NUT ASSEMBLY BY MEANS OF HAND KNOB "B" TO EXPOSE CLAMPING SCREW "D" ON NUT "C".
  - (3) LOOSEN CLAMPING SCREW "D" SLIGHTLY.
  - (4) ROTATE NUT "C" COUNTER-CLOCKWISE BY MEANS OF (3/8 OR 1/2" ROD) "F" WHEN VIEWED FROM PROJECTING HUB "E". ROTATION OF HUB MUST BE PREVENTED DURING THIS OPERATION.
  - (5) RETIGHTEN CLAMPING SCREW "D".
  - (6) REPLACE COVER "A".
- TO DECREASE TORQUE SETTING  
REPEAT ABOVE STEPS EXCEPT (4)  
ROTATE NUT "C" CLOCKWISE.



**LUBRICATION**  
USE SUNOCO SUNEPP 460 OIL (OR EQUIVALENT) TO LEVEL HOLE.

