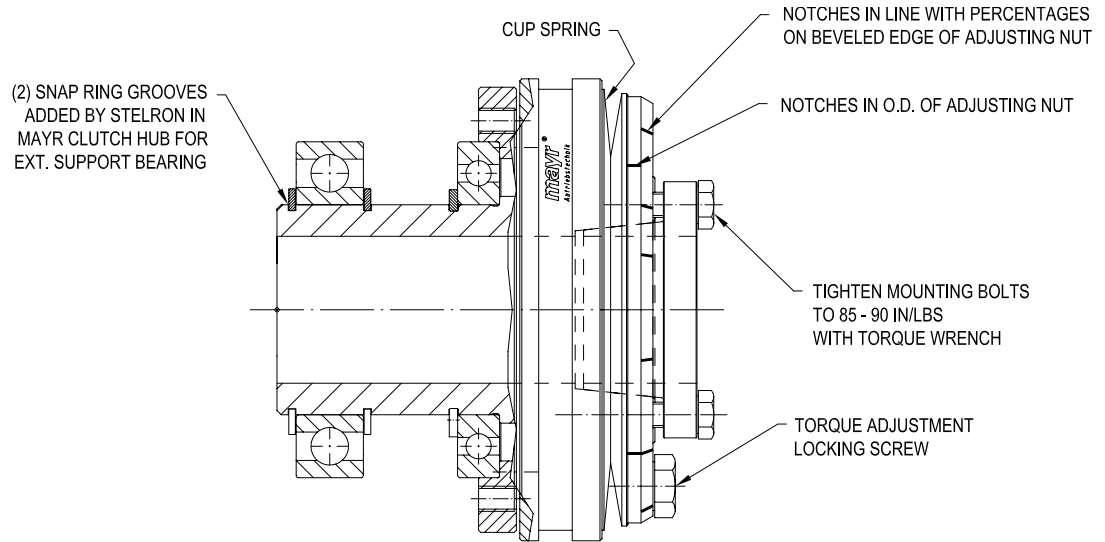
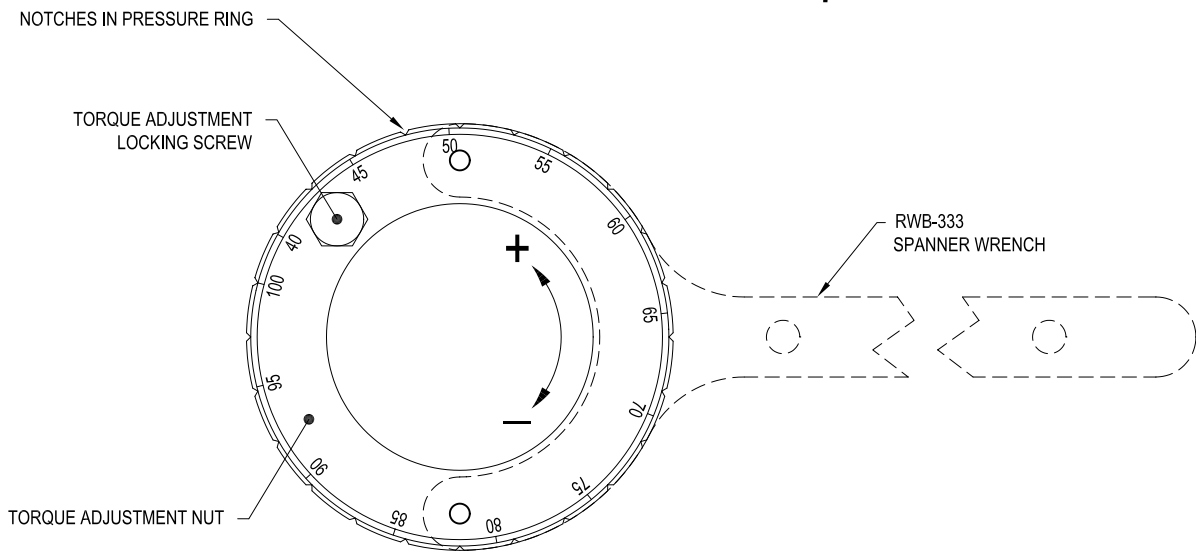


MAYR OVERLOAD CLUTCH ADJUSTMENT



MAYR CLUTCH #2/450.⁶/₇15.1



TO INCREASE OR DECREASE TORQUE SETTING

- 1) Remove torque adjustment locking screw.
- 2) Using the Spanner Wrench supplied turn the torque adjusting nut counter-clockwise (+) to increase torque or clockwise (-) to decrease torque.
- 3) Note that the paint mark on the O.D. of the pressure ring represents the factory setting. If this setting is changed in the field the paint mark should be replaced.

TO RE-SET THE CLUCH AFTER DIS-ASSEMBLY

- 1) Remove torque adjustment locking screw.
- 2) Grease the thread and contact faces of the adjusting nut, pressure ring and hub.
- 3) Screw on the adjusting nut, by hand, until contact is made with the cup spring.
- 4) Using the Spanner Wrench supplied turn the torque adjusting nut clockwise (-) 53 graduations for a 615 clutch or 57 graduations for a 715 clutch. (*see the bill of material to determine which clutch is supplied*)
- 5) This setting is for 70% of maximum torque.
- 6) Insert the torque adjustment locking screw before operating the machine.