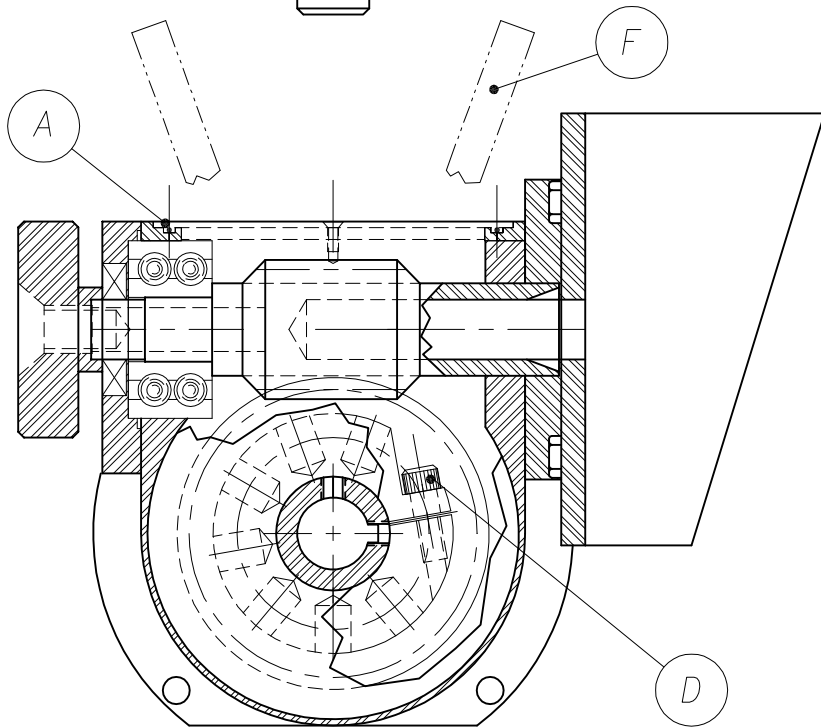
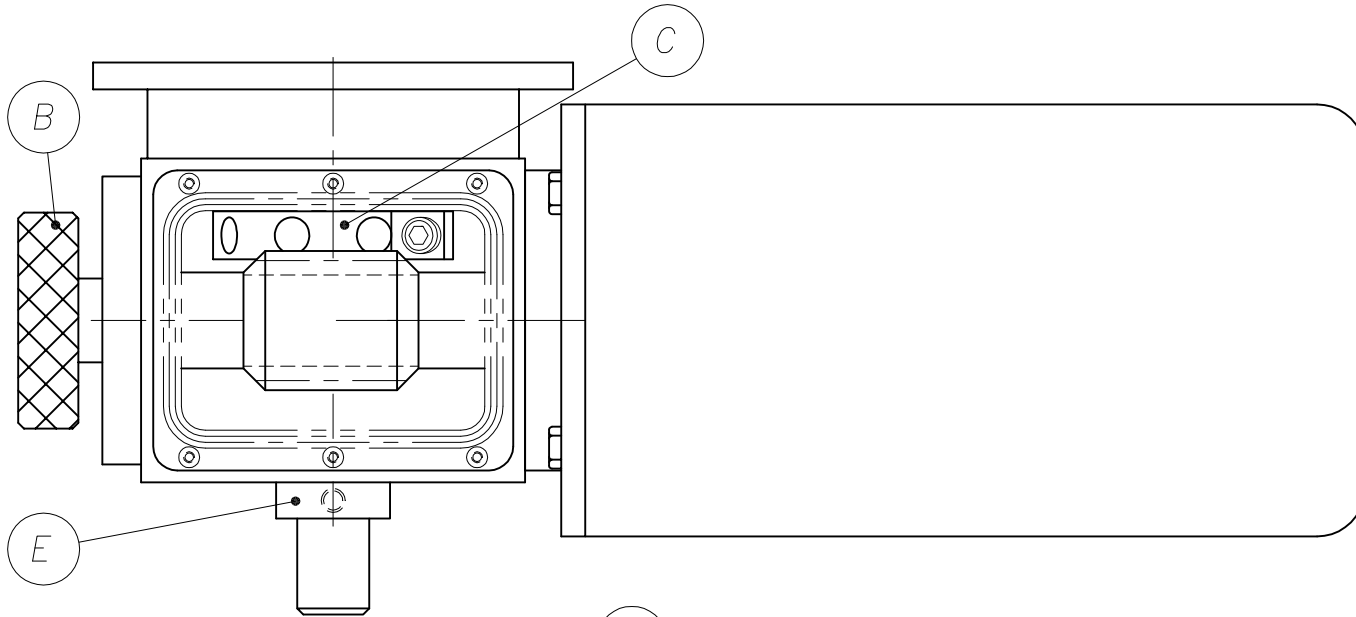


STELRON COMPONENTS, inc.

SCALE: HALF	PLOT A 1=2	DRAWN BY: RZ
DATE: 6/3/96		REVISED:
TITLE ASSEMBLY DRAWING		
GR WORM GEAR POWER DRIVE		DRAWING NO. GR-175A



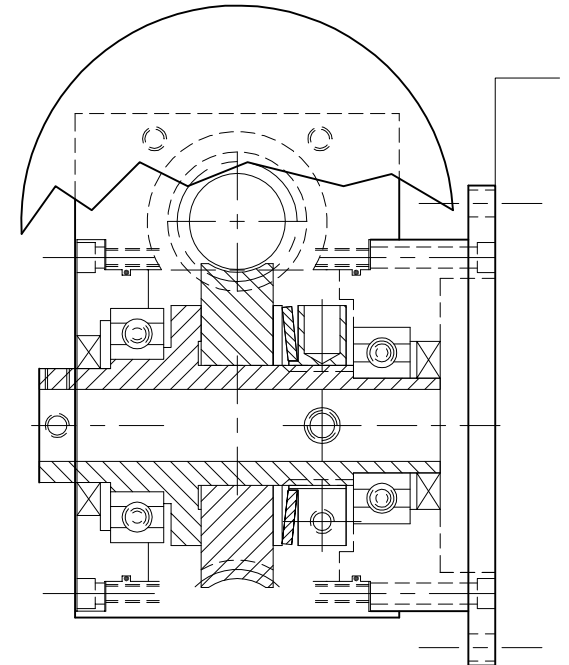
CLUTCH ADJUSTMENT

TO INCREASE TORQUE SETTING

- (1) REMOVE TOP COVER "A".
- (2) ROTATE NUT ASSEMBLY BY MEANS OF HAND KNOB "B" TO EXPOSE CLAMPING SCREW "D" ON NUT "C".
- (3) LOOSEN CLAMPING SCREW "D" SLIGHTLY.
- (4) ROTATE NUT "C" COUNTER-CLOCKWISE BY MEANS OF (3/8 OR 1/2" ROD) "F" WHEN VIEWED FROM PROJECTING HUB "E". ROTATION OF HUB MUST BE PREVENTED DURING THIS OPERATION.
- (5) RETIGHTEN CLAMPING SCREW "D".
- (6) REPLACE COVER "A".

TO DECREASE TORQUE SETTING

- REPEAT ABOVE STEPS EXCEPT (4)
ROTATE NUT "C" CLOCKWISE.



LUBRICATION
USE SUNOCO SUNEP 460
OIL (OR EQUIVALENT) TO
LEVEL HOLE.